



SAFETY WARNINGS

SEE CORRESPONDING WARNINGS _____ SW-1

FLATBED PRODUCTS

WINCH SPECIFICATIONS		
Winch Specifications _____	FP-2	
STANDARD WINCHES		
Weld-On Webbing Winches _____	FP-4	
Portable Webbing Winches _____	FP-4	
Weld-On Combination Webbing & Cable Winches _____	FP-5	
Portable Combination Webbing & Cable Winches _____	FP-5	
Weld-On Leg Bracket Webbing Winches _____	FP-5	
SPECIAL APPLICATION WINCHES		
3-Bar Webbing Winches _____	FP-6	
Weld-On Cable Only Winches _____	FP-6	
Bolt-On Webbing Winches _____	FP-7	
Sliding Webbing Winches _____	FP-8	
Weld-On Disc Webbing Winches _____	FP-8	
Double "L" Sliding Winches _____	FP-9	
ACCESSORIES		
Sliding Winch Tracks _____	FP-9	
Winch Bars _____	FP-10	
Chain Assemblies & Chain Binders _____	FP-10	
Lock Boxes _____	FP-11	
Forged D-Ring Assemblies with Weld-On Clips _____	FP-11	
Welded D-Ring Assemblies with Attachment Clips _____	FP-11	
Weld-On Rope Hooks _____	FP-12	
Rope Hooks _____	FP-12	
C & J Hooks _____	FP-12	
Heavy Duty Tarp Straps _____	FP-13	
Shock Cord & California Truck Rope _____	FP-13	
Heavy Duty Rubber Rope _____	FP-13	
STANDARD WINCH STRAPS		
4 Inch Standard Winch Straps _____	FP-14	
3 & 2 Inch Standard Winch Straps _____	FP-15	
Webbing Accessories _____	FP-15	
STANDARD RATCHET STRAPS		
4 Inch Standard Ratchet Straps _____	FP-16	
3 Inch Standard Ratchet Straps _____	FP-16	
2 Inch Standard Ratchet Straps _____	FP-17	
2 Inch Ratchet Strap Fixed Ends _____	FP-17	
2 Inch Adjustable Ends _____	FP-17	

INTERIOR VAN PRODUCTS

LOGISTIC STRAPS		
2 Inch Logistic Ratchet Straps _____	IV-2	
2 Inch Logistic Cam Buckle Straps _____	IV-3	
1.75 Inch Overcenter Buckle Straps _____	IV-4	
2 Inch Rope Tie-offs _____	IV-5	
Door Pulls _____	IV-5	
PAN FITTINGS		
Pan Fittings with Rings _____	IV-5	
LOGISTIC TRACKS		
Series E, A & F Tracks _____	IV-6	

	PRODUCTS	WARNINGS
DECKING/SHORING BEAMS		
Series E or A Decking/Shoring Beams_____	IV-7	
Series F Round Shoring Bars_____	IV-7	
LOAD LOCKS		
Load Locks_____	IV-8	
Replacement Parts_____	IV-8	
HOOP SETS		
Hoop Sets_____	IV-9	
JACK BARS		
Pallet Stabilizer_____	IV-9	
Heavy Duty Jack Bars_____	IV-9	
Replacement Parts_____	IV-9	

MISCELLANEOUS

ONE INCH ALL-PURPOSE STRAPS		
Light Duty Ratchet Straps_____	MS-2	▲
Heavy Duty Ratchet Straps_____	MS-2	▲
Light Duty Cam Buckle Straps_____	MS-3	▲
Heavy Duty Cam Buckle Straps_____	MS-3	▲
Nets_____	MS-3	▲
BULK WEBBING		
Bulk Webbing_____	MS-4	
AUTO TIEDOWNS		
Wheel Tiedowns_____	MS-4	▲
Recovery Tow Straps_____	MS-5	▲
AXLE STRAPS		
Axle Straps_____	MS-5	
Heavy Duty Axle Straps_____	MS-5	
OVERHEAD LIFTING SLINGS		
Endless Lifting Slings (Type V)_____	MS-6	▲
Eye & Eye Lifting Slings (Type III & IV)_____	MS-6	▲

GENERAL HARDWARE

TENSIONERS		
Ratchet Buckles_____	GH-2	▲
Overcenter Buckles_____	GH-3	▲
Cam Buckles_____	GH-3	▲
ATTACHMENT HARDWARE		
Flat Hooks_____	GH-3	▲
Snap Hooks_____	GH-4	▲
Wire Hooks_____	GH-4	▲
Chain Anchors_____	GH-5	▲
D-Rings_____	GH-5	▲
V-Rings_____	GH-6	▲
Specialty Fittings_____	GH-6	▲
S Hooks_____	GH-6	▲
Logistic Track Fittings_____	GH-7	▲
Quick Links_____	GH-7	▲
Lashing Winches, Gate Latch_____	GH-8	▲
Bearings, Chains, Shaft Collars_____	GH-9	▲

GENERAL INFORMATION

PRODUCT INFORMATION_____	GI-2
SPECIFICATIONS_____	GI-2
PRICING_____	GI-2
LIMITED WARRANTY_____	GI-2
INDEX_____	GI-3

GENERAL SAFETY WARNINGS IMPORTANT - PLEASE READ

- PRIOR TO USING ANY PRODUCT FROM THIS CATALOG, CAREFULLY READ AND FOLLOW ALL INSTRUCTIONS, WARNINGS AND SAFETY INFORMATION THAT ACCOMPANY OR THAT ARE CONTAINED ON THE PRODUCT.
- IT IS THE OWNER'S/USER'S RESPONSIBILITY TO EVALUATE THE SUITABILITY OF ANY CARGO SECURING DEVICE OR OTHER PRODUCT, FOR ANY PARTICULAR NEED OR APPLICATION. CHECK ALL APPLICABLE INDUSTRY, TRADE ASSOCIATION, FEDERAL, STATE AND LOCAL REGULATIONS.
- ALL RATINGS REFERENCED IN THIS CATALOG ARE FOR PRODUCTS IN NEW CONDITION. AGE, WEAR, DAMAGE, DETERIORATION AND ENVIRONMENTAL EXPOSURE CAN GREATLY REDUCE STRENGTH. ALL PRODUCTS SHOULD BE REGULARLY INSPECTED AND ANY WORN, CUT, AGED, DAMAGED, MISUSED, OVERUSED OR IMPROPERLY MAINTAINED PRODUCT SHOULD BE REPLACED IMMEDIATELY.
- IN MOST CASES, WORKING LOAD LIMITS REFERENCED IN THIS CATALOG ARE RATED AT ONE-THIRD OF THE BREAKING STRENGTH. RATINGS ARE BASED ON A STRAIGHT TENSILE PULL. LOAD DIRECTIONS OTHER THAN STRAIGHT CAN RESULT IN A SIGNIFICANT REDUCTION IN BREAKING STRENGTH.
- LISTED BREAKING STRENGTHS DO NOT IMPLY ANY PARTICULAR WORKING LOAD LIMIT.
- ALL CARGO RESTRAINING ASSEMBLIES OR SYSTEMS ARE ONLY AS STRONG AS THE WEAKEST COMPONENT, INCLUDING THE POINT OF ATTACHMENT. CAUTION: NEVER EXCEED WORKING LOAD LIMIT.

FAILURE TO FOLLOW INSTRUCTIONS AND WARNINGS OR PROPER USE, CARE AND INSPECTION CRITERIA MAY RESULT IN CARGO DAMAGE, SEVERE PERSONAL INJURY OR DEATH. THESE PRODUCTS ARE USED ENTIRELY AT THE USERS' OWN RISK. USE OF THESE PRODUCTS DEMONSTRATES UNDERSTANDING OF THE WARNINGS AND THE RISKS INVOLVED.

WINCH WARNINGS:

- All PCC winches have been manufactured to ensure proper pawl-to-gear/sprocket engagement through the forces of gravity when positioned, installed and used properly. Winches should be installed so the user can readily see the pawl to ensure proper engagement. Winches should never be installed in a position where the user must hold the pawl to engage the gear/sprocket tooth. All winches except bolt-on, portable and slider winch designs, must be welded to the trailer frame. Minimum welding requirements are 1/4 inch fillet weld, 4 inches long on both sides of the winch frame and 1/8 inch penetration. Welding may emit toxic fumes. Welding should be done by trained personnel with adequate ventilation and proper safety equipment.
- To ensure user safety when tightening or loosening winches, always maintain a firm grip on the winch tightening bar. Never release a winch bar from its leveraged position without checking the pawl to ensure that it is fully engaged between the gear/sprocket teeth. Releasing a winch bar without the pawl being properly engaged can cause serious injury to the user or bystanders. Pacific recommends the use of a slip resistant handle winch bar specifically designed to tighten or loosen winches. Only winch bars designed to be used with winches shall be used to tension and release the tiedown. (PCC Winch Bar Part No.s 7002, 7003, 7004, and 7005, refer to PCC's Flatbed Products Catalog).
- Winches should never be used as pulling or lifting devices.
- "Cheater Bars" or "Extenders" should never be used with winch bars.
- All binders should be checked during transit and re-tensioned as required by Department of Transportation Regulations, 49 CFR Part 392, Section 392.9(b)(2)&(b)(3).

TRACK WARNINGS:

- Welding may emit toxic fumes. Welding should be done by trained personnel with adequate ventilation and proper safety equipment.

WINCH BAR WARNINGS:

- Failure to comply with this warning may result in serious personal injury or death.
- Inspect winch or chain binder and winch bar for defects before each use. Do not use if defective, broken, worn, cracked or deformed. Do not repair, remove from service immediately.
- Never extend or alter the winch bar. Keep both feet flat on ground during use.
- This product is used entirely at the user's own risk. Use of this product demonstrates understanding of this warning and the risks involved.
- Refer to applicable federal, state or local regulations for loading & transportation requirements.

When using a winch bar with winches:

- Winch bar point must be inserted through two holes in winch cap during use. Failure to properly insert winch bar point may cause damage or failure of the winch or winch bar, leading to serious personal injury and death.
- Position body out of rotation path in case of winch bar slippage.
- During tightening and before releasing the tiedown assembly, the winch pawl must be checked for correct engagement.
- If using a winch bar with optional chain binder cradle with chain binders:
 - Follow chain binder manufacturer's recommendations.
 - Chain binder handle must be fully inserted and securely locked in winch bar cradle. Failure to properly secure chain binder handle in winch bar may cause damage or failure of the winch bar or chain binder, leading to serious personal injury or death.
 - Position body out of rotation path in case of winch bar slippage.

4 CHAIN BINDER WARNINGS:

LOAD BINDING SYSTEMS STORE ENERGY THAT CAN RELEASE SUDDENLY, CAUSING INJURY. STAY CLEAR OF BINDER, AS IT CAN SUDDENLY RELEASE WITH FORCE.

FAILURE TO COMPLY WITH THIS WARNING MAY RESULT IN SERIOUS INJURY, DEATH, OR CARGO DAMAGE. THIS PRODUCT IS USED ENTIRELY AT THE USER'S OWN RISK. USE OF THIS PRODUCT DEMONSTRATES UNDERSTANDING OF THE WARNING AND RISKS INVOLVED.

- Inspect entire load binder before each use. Do not use if defective or deformed; do not repair; immediately remove from service.
- Do not use lever bars or cheater bars when tightening chain binders.
- Tighten chain by positioning the load binder so the handle can be pulled downward.
- When operating, stand securely on the ground; do not stand on the load.
- Secure handle to chain when in use.
- Use caution when releasing load. Position body out of handle path, it may whip.
- Refer to applicable Federal, State, or Local regulations.
- Clean and lubricate all moving parts periodically.
- Keep this label for future reference.

NEVER EXCEED THE WORKING LOAD LIMIT (WLL). REMEMBER, ALL ASSEMBLIES ARE ONLY AS STRONG AS THEIR WEAKEST POINT, INCLUDING THE POINT OF ATTACHMENT.

5 GENERAL HARDWARE WARNINGS:

- These items are rated with breaking strength. Listed breaking strengths do not imply any particular working load limit. It is up to the manufacturer/ assembler to determine working load limit. The working load limit shall not exceed 1/3 of the hardware's breaking strength.

6 RUBBER TARP STRAP WARNINGS:

- Eye protection during connection and disconnection is required. Discard any or all Rubber Tarp Straps if cut or cracked or if "S" Hooks are bent, damaged or corroded
- PCC Rubber Tarp Straps are designed solely to hold tarps in place. Tarp straps should not be used for restraining or securing cargo.
- Over tensioning may cause the tarp strap to rupture!
- Sudden rupture or sudden disconnection while in the stretched position may cause serious personal injury.

7 WEBBING STRAP ASSEMBLY WARNINGS:

- Inspect entire assembly before each use. Do not use if hardware is defective; webbing is burnt, melted, cut, frayed, abraded, altered, or if any damage to assembly is seen.
- Warranty is void if strap is cut, abraded or subjected to abnormal wear and tear.
- **DO NOT EXCEED WORKING LOAD LIMIT (WLL). DO NOT USE FOR LIFTING, TOWING OR PERSONAL RESTRAINT.**
- Ratchets, buckles, cams or other tensioning or locking devices must be closed and in locked position when used.
- Strength significantly reduced if load path is not in a straight line.
- Avoid sharp edges. Use corner protectors per federal law.
- Protect webbing from heat, hot surfaces & acids. Do not store in sunlight.
- Do not repair webbing, hardware or stitching. Remove from service immediately.
- Anchor points must be rated equal to or greater than assembly strength.
- Do not use 'cheater bars' or lever bars on hardware when tensioning.
- Per Federal Motor Carrier Safety Administration 49 CFR Part 393.106(d).

WEBBING STRAP ASSEMBLY WARNINGS (continued):

The aggregate working load limit of tiedowns used to secure an article or group of articles against movement must be at least one-half times the weight of the article or group of articles. The aggregate working load limit is the sum of:

1. One-half the working load limit of each tiedown that goes from an anchor point on the vehicle to an anchor point on an article of cargo;
2. One-half the working load limit of each tiedown that is attached to an anchor point on the vehicle, passes through, over, or around the article of cargo, and is then attached to the anchor point on the same side of the vehicle.
3. The working load limit for each tiedown that goes from an anchor point on the vehicle, through, over, or around the article of cargo, and then attaches to another anchor point on the other side of the vehicle.

Per Canada National Safety Code for Motor Carriers, NSC Standard 10 Cargo Securement

Minimum Strength of Securement System

1. In this section, the 'aggregate working load limit' is the sum of One-Half of the working load limit for each end section of a tiedown that is attached to an anchor point.
2. The aggregate working load limit of the cargo securement system used to secure an article of cargo on or within a vehicle shall not be less than 50% of the weight of the article.
3. The aggregate working load limit of the cargo securement system used to secure a group of articles of cargo on or within a vehicle shall not be less than 50% of the total weight of the group.

Owners/users of cargo restraint equipment should be familiar with the above documents in their entirety as applicable.



OVERHEAD LIFTING SLING WARNINGS:

- Synthetic products can fail if damaged, misused or overloaded. Inspect before each use. Not for use by untrained personnel. Death or injury can occur from improper use, maintenance or lack of inspection.
- Synthetic products can be cut by contact with load edges. Padding of sufficient strength and thickness must be used to protect the sling.
- Do not use to pull on objects in a snagged or constrained condition.
- Never use slings when the load will slip or slide. This loss of control can result in sling failure. Always control the load.
- Do not use if red core warning yarns or inner core fibers are visible. Do not use if cuts, abrasions, knots or other defects are present.
- Never overload the sling beyond the working load limits. Always take into account the effect that angles have on sling capacity.
- Never expose to alkalis, acids, caustics and temperatures over 180 degrees(F)/ 82 degrees(C).
- Do not expose to extensive sunlight or ultraviolet light.
- Do not use if attached fittings are damaged, stretched, distorted or corroded.

O.S.H.A. - Removal from Service Criteria (Excerpts from CFR 29 1910.184 - 7/1/90)

Synthetic web slings shall be immediately removed from service if any of the following conditions are present:

- I. Acid or caustic burns.
- II. Melting or charring of any part of the sling surface.
- III. Snags, punctures, tears or cuts.
- IV. Broken or worn stitches.
- V. Distortion of fittings.

A.N.S.I. - Removal from Service Criteria (Excerpts from ASME B30.9A - 9/22/97)

A sling shall be removed from service if damage such as the following is visible and shall only be returned to service when approved by a designated person:

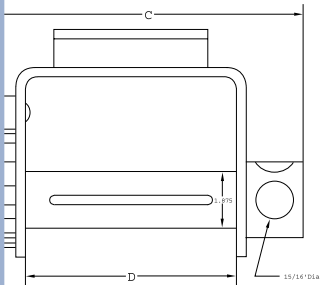
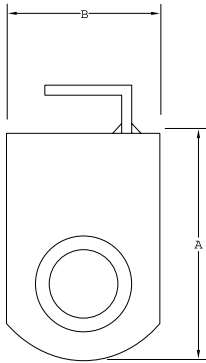
- A. Acid or caustic burns.
- B. Melting or charring of any part of the sling.
- C. Holes, tears, cuts or snags.
- D. Broken or worn stitching in load bearing splices.
- E. Excessive abrasive wear.
- F. Knots in any part of the sling.
- G. Excessive pitting or corrosion, or cracked, distorted or broken fittings.
- H. Other visible damage that causes doubt as to the strength of the sling.

** See Limited Warranty.



FLATBED PRODUCTS

WINCH SPECIFICATIONS

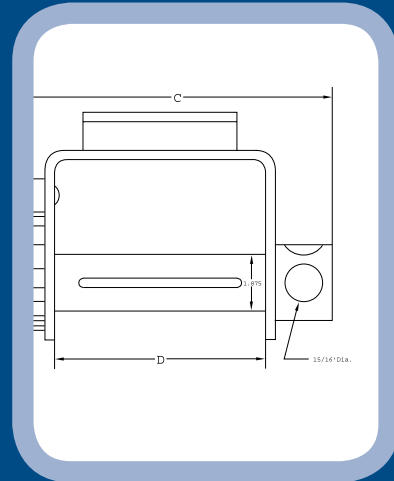
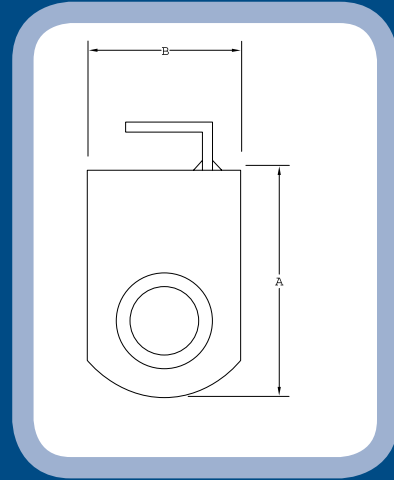


NOTE: Some winch dimensions may vary slightly where improvements or modifications in manufacturing have taken place after the printing of this catalog.


<u>Part Number</u>	<u>"A" Inches</u>	<u>"B" Inches</u>	<u>"C" Inches</u>	<u>"D" Inches</u>	<u>Weight lbs.</u>
7420-D	9	3 1/2	6 1/2	3 1/4	10.9
7430-D	9	3 1/2	7 1/2	4	12.0
7440-D	9	3 1/2	8	4 7/8	12.9
7525	4 1/8	4	9 1/2	6 1/2	12.2
7527	5	4	10	6 3/8	11.3
7530	5 1/2	3 1/2	9 1/2	6 1/2	12.5
7530-U	5 1/2	3 1/2	9 1/2	6 1/2	18.1
7540	5 1/2	3 1/2	7 7/8	4 7/8	8.6
7540-LH	5 1/2	3 1/2	7 7/8	4 7/8	8.6
7540-NP	5 1/2	3 1/2	7 7/8	4 7/8	8.0
7545-LH	7 5/8	4	10	4	15.5
7545-RH	7 5/8	4	10	4	15.3
7570	5 1/2	3 1/2	7 7/8	4 7/8	7.0
7571	5 1/2	4	9	5 3/4	8.6
7572	6 1/2	4	7 7/8	4 3/4	8.3
7573	6 1/8	3 3/4	7 7/8	4 3/4	8.4
7573-3B	4 1/2	3 3/4	9 5/8	6 3/8	13.2
7574	6	5 3/4	7 7/8	4 3/4	9.3
7574-3B	6	5 7/8	9 5/8	6 1/2	13.2
7574A	6	4 3/4	7 7/8	4 3/4	8.5
7576	6	4	7 7/8	4 3/4	10.3
7585	5 1/2	4	7 7/8	4 3/4	9.3
7590	7	4	7 7/8	4 3/4	10.5
7590-TR	5 5/8	3 1/2	8	4 7/8	8.4
7590S	7 1/2	4	7 7/8	4 3/4	10.9

WINCH SPECIFICATIONS

<u>Part Number</u>	<u>"A" Inches</u>	<u>"B" Inches</u>	<u>"C" Inches</u>	<u>"D" Inches</u>	<u>Weight lbs.</u>
8425	4	4	7 7/8	4 7/8	7.8
8425-LH	4	4	7 7/8	4 7/8	7.8
8425-NP	4	4	7 7/8	4 7/8	7.8
8425C	4	4	9 3/4	6 1/2	9.5
8425-CM	4	4 1/2	9	4 7/8	10.6
8427	3 7/8	4 7/8	8 1/8	4 3/4	7.0
8427-CM	4 5/8	4 7/8	8 1/8	4 3/4	8.0
8427C	3 7/8	4 7/8	10	6 1/2	8.2
8430	5 1/2	3 1/2	7 7/8	4 7/8	8.2
8430-DC	5 1/2	3 1/2	9 5/8	4 7/8	9.0
8430-U	5 1/2	3 1/2	7 7/8	4 7/8	12.3
8430C	5 1/2	3 1/2	9 3/4	6 1/2	10.0
8430F	5 1/2	3 1/2	7 7/8	4 7/8	11.6
8430S	7	4	7 7/8	4 3/4	10.0
8435	4	4	7 7/8	4 7/8	7.8
9525	4	4	7 7/8	4 7/8	8.1
9525-2S	4	4	7 7/8	4 7/8	8.6
9525C	4 1/4	4	9 3/4	6 1/2	10.0
9525C-2S	4 1/4	4	9 3/4	6 1/2	10.5
9530	5 1/2	3 1/2	7 7/8	4 7/8	9.0
9530-2S	5 1/2	3 1/2	7 7/8	4 7/8	9.5
9530-M	5 1/2	3 1/2	7 7/8	4 7/8	9.0
9530C	5 1/2	3 1/2	9 3/4	6 1/2	10.4
9530C-2S	5 1/2	3 1/2	9 3/4	6 1/2	10.8



NOTE: Some winch dimensions may vary slightly where improvements or modifications in manufacturing have taken place after the printing of this catalog.

PCC Trailer Winches, when properly installed, provide a safe method of securing cargo on utility trailers, farm flatbeds, heavy duty flatbeds, railcars and other vehicles. Pacific offers a wide selection of varying bases, mandrel designs and mounting applications that can be used with webbing straps (up to 4 inches in width), wire rope or cable to suit a variety of load securement needs. All PCC winches have been designed, tested and labeled to meet or exceed all U.S. Department of Transportation (DOT) and Transport Canada (TC) regulations (including Test Method 905), Commercial Vehicle Safety Alliance (CVSA) guidelines, Web Sling & Tiedown Association (WSTDA) recommended standard specifications, California Highway Patrol (CHP) regulations, and FMCSA (Federal Motor Carrier Safety Administration) regulations including the new North American Cargo Securement Standards effective December 26, 2002. All PCC winches are labeled with 5,000 lbs. (2,270 kgs.) WLL unless otherwise stated or otherwise ordered. 

STANDARD WINCHES

Weld-On Webbing Winches

Weld-On Winches are designed to be permanently mounted to the trailer frame in a fixed position.



Portable Webbing Winches

Portable Webbing Winches provide a great deal of flexibility during application because they can be located anywhere along the outer rail channel, as long as they do not interfere with any other trailer components when the trailer is loaded or unloaded (e.g. tire clearance).



Weld-On Combination Webbing & Cable Winches



Weld-On Combination Winches are designed to be permanently mounted to the trailer frame in a fixed position. Combination Winches can be used with webbing straps, wire rope or cable as the binder when securing a load to a vehicle. For Cable Winch applications, cable and/or wire rope selection must be consistent with the cable manufacturer's safe working load rating.



8425C
Side Mount Weld-On



8430C
Standard Weld-On



8427C
Side Mount Weld-On Leg Bracket Combo

Portable Combination Webbing & Cable Winches



Portable Combination Winches provide a great deal of flexibility during application because they can be located anywhere along the outer rail channel, as long as they do not interfere with any other trailer components when the trailer is loaded or unloaded (e.g. tire clearance). Combination Winches can be used with webbing straps, wire rope or cable as the binder when securing a load to a vehicle. For Cable Winch applications, cable and/or wire rope selection must be consistent with the cable manufacturer's safe working load rating.



9525C
Side Mount Portable Combo



9525C-2S
Side Mount Portable Combo
with 2 Set Screws



9530C
Standard Under Mount Portable Combo



9530C-2S
Standard Under Mount Portable Combo
with 2 Set Screws

Weld-On Leg Bracket Webbing Winches



Weld-On Leg Bracket Winches are designed to be permanently mounted to the trailer frame in a fixed position. Pacific generally utilizes 1/2 inch plate stock for the manufacturing of our side mount leg brackets instead of 5/16 or 3/8 inch plate used by our competitors. Combination Winches can be used with webbing straps, wire rope or cable as the binder when securing a load to a vehicle. For Cable Winch applications, cable and/or wire rope selection must be consistent with the cable manufacturer's safe working load rating.



7571
Backless Under Mount Weld-On



8427



8427C



8427-CM
Side Mount Weld-On Leg Bracket
with Enlarged Side Plate

SPECIAL APPLICATION WINCHES

3-Bar Webbing Winches



The unique 3-Bar mandrel design allows for easy strap end insertion during the winter months when standard mandrel slots are impaired by ice build-up. Strap ends are also easily inserted during normal weather conditions because of the wide slot openings between the bars.



7525
3-Bar Side Mount Weld-On



7527
3-Bar Backless Under Mount Weld-On



7530

Weld-On Cable Only Winches



Weld-On Cable Only Winches are designed for use with wire rope and/or cable as the binder when securing a load to a vehicle. The standard winch no.'s 7540, 7540-LH and 7540-NP are designed for under mount or bottom mount applications only. The 7545-RH and 7545-LH are designed to be mounted on the ends of trailers in a side mount, permanent position. For Cable Winch applications, cable and/or wire rope selection must be consistent with the cable manufacturer's



7540
Cable Only Under Mount Weld-On
with Post



7540-LH
Cable Only Under Mount Weld-On
with Post - Left Hand



7540-NP
Cable Only Under Mount Weld-On
without Post



7545-LH
Cable Only End Mount Weld-On
Left Hand



7545-RH
Cable Only End Mount Weld-On
Right Hand

Bolt-On Webbing Winches



Bolt-On Webbing Winches have been designed to solve the problem of attaching steel winches to aluminum flatbed trailers without welding. By placing a gasket between the two surfaces, galvanic corrosion can be prevented. These winches can be easily bolted on the outer rails of several aluminum trailer designs. Please contact your Pacific Sales Representative for specific information.



7570
Under Mount Bolt-On
4" Top Plate



7572
Shallow Under Mount Bolt-On
2" Top Plate



7573
Under Mount Bolt-On
1 1/4" Top Plate



7573-3B
3-Bar Under Mount Bolt-On
1 1/4" Top Plate



7574
Side Mount Bolt-On
3" Top Plate



7574A
Side Mount Bolt-On
2" Top Plate



7576
45 Degree Side Rail Bolt-On



8425-4H
Side Mount Bolt-On Winch
with 4 Mounting Holes



7574-3B
3-Bar Side Mount Bolt-On
3" Top Plate

Sliding Webbing Winches



Sliding Winches have been designed for flexibility and security. The winches can be located anywhere along the length of the slider track and will lock into position when tension is applied to the strap assembly for a safe and secure tiedown. Some Sliding Winches can be used as weld-on winches in fixed applications. Most PCC Sliding Winches are used with PCC Sliding Winch Track or equivalent (PCC Sliding Track No.'s 7580-ST and 7580-AT Sliding Winch Track, page FP-9).



7585
Low Height Under Mount Sliding



7590
Standard Under Mount Sliding



7590S
Storable Under Mount Sliding



7590C
Under Mount Sliding Combo



8435-W
Low Height Side Rail Under Mount Sliding (Available in High Profile)



7530-U
Side Rail Under Mount Sliding 3-Bar (Shown Zinc Plated)



8430-F
Side Rail Under Mount Sliding



8430-U
Side Rail Under Mount Sliding

Weld-On Disc Webbing Winches



PCC Disc Winches are manufactured with large diameter washers which help keep the straps straight while rolling. The washers also protect the strap while in use and while stored. Disc Winches can store up to 30 foot of webbing.



7420-D
2" Under Mount Weld-On Disc



7430-D
3" Under Mount Weld-On Disc



7440-D
4" Under Mount Weld-On Disc

Double L Webbing Winches



Sliding Winches have been designed for flexibility and security. The winches can be located anywhere along the length of the slider track and will lock into position when tension is applied to the strap assembly for a safe and secure tiedown. Some Sliding Winches can be used as weld-on winches in fixed applications. PCC Sliding Winches must be used with PCC Sliding Winch Track or equivalent (PCC Sliding



7590C-TR
Combination Sliding Winch for
Double "L" Track



7585-TR
Double "L" Low Height Sliding



7590-TR
Double "L" Under Mount Sliding



7530-TR
Double "L" 3-Bar Sliding

ACCESSORIES

Sliding Winch Tracks



Sliding Winch Track integrates flexibility with security in the tiedown process. Sliding Winch Track allows sliding winches to be relocated to the optimal locations for each unique load configuration. Also, the track can be cross-bolted or capped on the ends to prevent winch theft. The design of both the Sliding Winch Track and the Sliding Winches, when used in an integrated system, create a self-cleaning, maintenance-free operation.



7580-ST
Steel Sliding Winch Track
6' Section



7580-AT
Aluminum Sliding Winch Track
6' Section



7580-AT-TRW
Aluminum Double "L" Wide Sliding Track
10' Section



7580-AT-TR
Aluminum Double "L" Sliding Track
10' Section

NOTE: Specific fastener size and/or mounting method should be determined by the vehicle manufacturer or qualified installer.

Winch Bars

3

PCC Winch Bars feature knurling for both hands creating a non-slip handle for safety. The winch bar tip shall be inserted through both holes in the winches end cap. **Standard Winch Bars should never be used for tightening Chain Binders.**



7002
Chrome Knurled Standard Winch Bar



7004
Chrome Knurled Combination Winch Bar



7004B
Chrome Knurled Binder Box Bar



7004T
Chrome Oversized Tube Combination Winch Bar



7003
Painted Knurled Standard Winch Bar



7005
Painted Knurled Combination Winch Bar



7005B
Painted Knurled Binder Box Bar



7005T
Painted Oversized Tube Combination Winch Bar

Chain Assemblies & Chain Binders

4

Pacific stocks several grades of chain in many common lengths. High Test Grade 43 Chain is made from high carbon steel to provide greater tensile strength. Transport Grade 70 Chain provides a high strength-to-weight ratio, which is achieved by a special heat treating process providing exceptional wear resistance and hardness. Other grades and sizes are available, please contact your Pacific Sales Representative for details.



6048

6048 1/4" Lever Binder
6057 3/8"-1/2" Lever Binder



6053

6053 5/16" - 3/8" Ratchet Binder USA
6054 5/16" - 3/8" Ratchet Binder



6070

6043 3/8" x 20' Grade 43 USA
6070 5/16" x 20' Grade 70 USA
6070-25 5/16" x 25' Grade 70 USA
6071 5/16" x 20' Grade 70
6073 3/8" x 20' Grade 70 USA
6074 3/8" x 20' Grade 70



6052

6052 5/16" - 3/8" Lever Binder USA
6050 5/16" - 3/8" Lever Binder



6055

6055 3/8" - 1/2" Ratchet Binder USA
6056 3/8" - 1/2" Ratchet Binder



6070-HK

6070-HK 5/16" Grade 70 Hook
6073-HK 3/8" Grade 70 Hook

Lock Boxes

PCC Lock Boxes provide a safe, secure and convenient method of storing 12 or 16 chain binders or chains. PCC Lock Boxes have all-steel construction.

- 6012 Chain Binder Lock Box - Holds 12 pieces
- 6016 Chain Binder Lock Box - Holds 16 pieces



6012

Forged D-Ring Assemblies with Weld-On Clips



PCC Forged D-Ring Assemblies provide versatility for today's complex trailer tiedowns. Pacific offers 1/2 & 5/8 inch for utility trailers and 3/4 & 1 inch for gooseneck and other heavy duty trailer platforms. Pacific is also able to custom-forged any size with the customer's name embossed on the ring. Please contact your Pacific Sales



DR-050
Forged 1/2" D-Ring Assembly
with Bolt-On Clip



DR-062
Forged 5/8" D-Ring Assembly
with Weld-On Clip



DR-075
Forged 3/4" D-Ring Assembly
with Weld-On Clip



DR-100L
Forged 1" D-Ring Assembly
with Weld-On Clip (Long)



DR-100L-B
Forged 1" Bent D-Ring Assembly
with Weld-On Clip (Long)

DR-100S
Forged 1" D-Ring Assembly
with Weld-On Clip (Short)

Bent D-Ring Assembly
also available in 5/8" and 3/4".

Welded D-Ring Assemblies with Attachment Clips

Pacific offers Welded D-Ring Assemblies with attachment clips for tiedown applications.



DR-6M
5/8" Welded D-Ring
with Weld-On Clip



DR-025
1/4" Welded D-Ring
with Bolt-On Clip



Weld-On Rope Hooks

All PCC Rope Hooks are manufactured from high quality steel round bar. The Double J Hook design helps to hold the shock cord or rubber rope in place while the slack is taken up during the tarping process.

- 7006 1/2" J Hook
- 7007 3/8" J Hook
- 7008 5/8" J Hook
- 7010 3/4" J Hook



7010

- 7012 5/8" Double J Hook
- 7014 3/4" Double J Hook



7014

Rope Hooks

PCC Rope Hooks easily fasten to steel or aluminum decks, trailer or platforms secure hold for tarp straps, shock cord or rubber rope.

and offer a



RH-038-B
3/8" Bolt-On Rope Hook



7018
Cast Steel Weld-On Rope Hook

C & J Hooks

All PCC C & J Hooks are flame cut from 5/8 inch steel plate stock. They are designed to fit flat on the outer side rails of trailers for ease of welding and will accept V-Rings, sewn loops, cables or ropes. Properly installed,



7015
5/8" Flame Cut J-Hook



7017
5/8" Small Flame Cut C-Hook



7026-ET
Flame Cut J-Hook with Bolt-On Plate



7016
5/8" Flame Cut Double J-Hook



7017B
5/8" Large Flame Cut C-Hook



7026-W
Flame Cut C Hook with Bolt-On Plate

Heavy Duty Rubber Tarp Straps

Pacific offers two types of Heavy Duty Rubber Tarp Straps. The first is made in the U.S.A. from EPDM Synthetic Rubber Polymer and exhibits exceptional tensile strength, stretch resiliency and ozone resistance. The second is made from a Natural Rubber Polymer and exhibits excellent tensile strength, stretch resiliency, stretch recovery and cold working capabilities.

EPDM Synthetic Rubber Polymer

Part #	Strap Length	Length with Hooks	Max. Stretch	Weight 50 pcs.
RB10-D	10"	14"	21"	10 lbs.
RB15-D	15"	20"	28"	12 lbs.
RB21-D	21"	25"	32"	15 lbs.
RB31-D	31"	36"	42"	19 lbs.
RB41-D	41"	46"	52"	23 lbs.

Natural Rubber Polymer

Part #	Strap Length	Length with Hooks	Span Inches	Weight 50 pcs.
RB09	9"	14"	09-18"	10 lbs.
RB15	15"	20"	15-30"	12 lbs.
RB21	21"	25"	21-42"	15 lbs.
RB31	31"	36"	31-62"	19 lbs.
RB41	41"	46"	41-82"	23 lbs.



RBTS100
S Hook

Shock Cord, California Truck Rope & Heavy Duty Rubber Rope



SC-18-150
Shock Cord

SC-18-150	3/16" x 150'
SC-25-150	1/4" x 150'
SC-31-150	5/16" x 150'
SC-38-150	3/8" x 150'
SC-38-250	3/8" x 250'
SC-50-100	1/2" x 150'



TR-38-600
California Truck Rope

PR-25-50	1/4" x 50'
TR-38-50	3/8" x 50'
TR-38-100	3/8" x 100'
TR-38-600	3/8" x 600'
TR-44-600	7/16" x 600'
TR-50-50	1/2" x 50'
TR-50-600	1/2" x 600'




RRSJ100
Rubber Rope SJ Hook
100 pieces per bag



RR375S
Heavy Duty Rubber Rope

RR375S	3/8" x 150' Solid Core
RR375H	3/8" x 150' Hollow Core
RR375SM	3/8" x 1,000' Solid Core
RR375HM	3/8" x 1,000' Hollow Core
RR438S	7/16" x 150' Solid Core
RR438H	7/16" x 150' Hollow Core
RR438SM	7/16" x 1,000' Solid Core
RR438HM	7/16" x 1,000' Hollow Core

PCC Standard Winch Straps are offered in 2, 3 and 4 inch webbing widths and have heat sealed ends to prevent fraying. Pacific Winch Straps are constructed from the highest quality, strength tested, resin-coated polyester achieving minimum stretch and maximum wear resistance required by the demanding conditions of flatbed operations. PCC Winch Straps meet or exceed U.S. Department of Transportation (DOT) and California Highway Patrol (CHP) regulations. All PCC Winch Straps are labeled to meet DOT & TC regulations, CVSA guidelines, WSTDA recommended standard specifications, CHP regulations, and the FMCSA's North America Cargo Securement Standards, effective December 26, 2002. 

STANDARD WINCH STRAPS

4 Inch Standard Winch Straps



4 Inch 20M Webbing 5,000 lbs./2,270 kgs. WLL



4527-VR (27')
4530-VR (30')



4527-VR-BL (27')
4530-VR-BL (30')



4527-VR-RD (27')
4530-VR-RD (30')

VR-4 V-Ring



4527-FH (27')
4530-FH (30')



4527-FH-BL (27')
4530-FH-BL (30')



4527-FH-RD (27')
4530-FH-RD (30')

FH-4 Flat Hook



4527-WH (27')
4530-WH (30')



4527-WH-BL (27')
4530-WH-BL (30')



4527-WH-RD (27')
4530-WH-RD (30')

WH-3-22M Wire Hook



4527-SL (27')
4530-SL (30')



4527-SL-BL (27')
4530-SL-BL (30')



4527-SL-RD (27')
4530-SL-RD (30')

Sewn Loop



4527-GH (27')
4530-GH (30')



4527-GH-BL (27')
4530-GH-BL (30')



4527-GH-RD (27')
4530-GH-RD (30')

GH-2/4-16M Grab Hook



4527-CX (27')
4530-CX (30')



4527-CX-BL (27')
4530-CX-BL (30')



4527-CX-RD (27')
4530-CX-RD (30')

CX-4-18M Chain Anchor

NOTE: 24,000 lbs. webbing is available for 4 inch winch straps. Consult your Pacific Sales Representative for ordering information.

3 & 2 Inch Standard Winch Straps



3 Inch Standard Winch Straps

WBS3-15M or 18M Webbing

4,000 lbs. or 5,400 lbs./1,815 kgs. or 2,450 kgs. WLL

Part #	Description
3627-VR	3" x 27' with VR-3 V-Ring
3627-FH	3" x 27' with FH-4 Flat Hook
3627-WH	3" x 27' with WH-3-22M Wire Hook
3627-GH	3" x 27' with GH-2/4-16M Grab Hook
3627-CX	3" x 27' with CX-3-18M Chain Anchor
3630-VR	3" x 30' with VR-3 V-Ring
3630-FH	3" x 30' with FH-4 Flat Hook
3630-WH	3" x 30' with WH-3-22M Wire Hook
3630-GH	3" x 30' with GH-2/4-16M Grab Hook
3630-CX	3" x 30' with CX-3-18M Chain Anchor

2 Inch Standard Winch Straps

WBS2-10M or 12M Webbing

3,000 lbs. or 3,335 lbs./1,361 kgs. or 1,515 kgs. WLL

Part #	Description
2527-DR	2" x 27' with DR-2-10M Delta Ring
2527-FH	2" x 27' with FH-2 Flat Hook
2527-WH	2" x 27' with WH-2-10M Wire Hook
2527-GH	2" x 27' with GH-2/4-16M Grab Hook
2527-CX	2" x 27' with CX-3/4-16M Chain Anchor
2530-DR	2" x 30' with DR-2-10M Delta Ring
2530-FH	2" x 30' with FH-2 Flat Hook
2530-WH	2" x 30' with WH-2-10M Wire Hook
2530-GH	2" x 30' with GH-2/4-16M Grab Hook
2530-CX	2" x 30' with CX-3/4-16M Chain Anchor

NOTE: PCC 3 inch winch straps' standard color is yellow. PCC 2 inch winch straps are available in yellow, blue, red and black. Please contact your Pacific Sales Representative for more information on custom colors and stencils.

Webbing Accessories



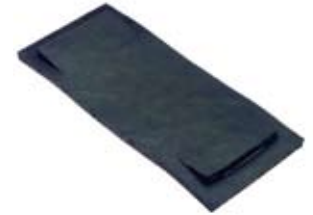
7029



T2400-2-3/8
2" Cordura Protective Sleeve-Black



7048
13-1/2" x 16 Gauge
Galvanized Steel Corner Protector



7042
4" Rubber Strap Guard
and Corner Protector



7028-B
Black Painted Steel Strap Winder



7041
Plastic Corner Protector
for 2", 3" or 4" Straps



7046
6" x 12 Gauge
Galvanized Steel Chain, Cable or Rope
Corner Protector with Chain Groove



7047
5" x 13 Gauge
Galvanized Steel Corner Protector

7045
4' Plastic "V" Board
May Be Cut to Length
for 2", 3" or 4" Straps



7049
Plastic Tarp Guard

PCC Ratchet Straps are constructed from the highest quality, strength tested, resin-coated polyester achieving minimum stretch and maximum wear resistance required by the demanding conditions of flatbed operations. All PCC Ratchet Straps are labeled to meet DOT & TC regulations, CVSA guidelines, WSTDA recommended standard specifications, CHP regulations, and the FMCSA's North America Cargo Securement Standards, effective December 26, 2002.



STANDARD RATCHET STRAPS

4 Inch Long Handle Ratchet Strap Assemblies



9032 Ratchet Buckle and 4 Inch 24M Webbing

	Part #	Length	End Hardware
	46227-VR	27'	VR-4
	46230-VR	30'	4" V-Ring
	46227-FH	27'	FH-4
	46230-FH	30'	4" Flat Hook
	46227-WH	27'	WH-3-22M
	46230-WH	30'	3" Wire Hook
	46227-GH	27'	GH-2/4
	46230-GH	30'	2" Grab Hook
	46227-CX	27'	CX-4-18M
	46230-CX	30'	4" Chain Anchor

3 Inch Long Handle Ratchet Strap Assemblies



8032 Ratchet Buckle and 3 Inch 18M Webbing

	Part #	Length	End Hardware
	36227-VR	27'	VR-3
	36230-VR	30'	3" V-Ring
	36227-FH	27'	FH-4
	36230-FH	30'	4" Flat Hook
	36227-WH	27'	WH-3-22M
	36230-WH	30'	3" Wire Hook
	36227-GH	27'	GH-2/4
	36230-GH	30'	4" Grab Hook
	36227-CX	27'	CX-3-18M
	36230-CX	30'	3" Chain Anchor

2 Inch Extra Long Wide Handle Ratchet Strap Assemblies



7030 Ratchet Buckle and 2 Inch 10M or 12M Webbing

	Part #	Length	End Hardware
	25027-FH	27'	FH-2
	25030-FH	30'	2" Flat Hook
	25027-DR	27'	DR-2-10M
	25030-DR	30'	2" Delta Ring
	25027-TSH	27'	TSH-2-10M
	25030-TSH	30'	2" Twisted Snap Hook
	25027-WH	27'	WH-2-10M
	25030-WH	30'	2" Wire Hook
	25027-SL	27'	Sewn Loop
	25030-SL	30'	
	25027-GH	27'	GH-2/4
	25030-GH	30'	Grab Hook
	25027-CX	27'	CX-3/4-16M
	25030-CX	30'	2" Chain Anchor

2 Inch Ratchet Strap Fixed Ends & Adjustable Ends



Pacific offers replacement ends for any of the ratchet strap assemblies listed, as well as any special or custom length ratchet strap assemblies. Consult your Pacific Sales Representative for ordering information.

Part #	Description
25D12-FH	Fixed End Only for 27'/30' Ratchet Strap with Flat Hook
25D12-DR	Fixed End Only for 27'/30' Ratchet Strap with Delta Ring
25D12-TSH	Fixed End Only for 27'/30' Ratchet Strap with Snap Hook
25D12-WH	Fixed End Only for 27'/30' Ratchet Strap with Wire Hook
25D12-SL	Fixed End Only for 27'/30' Ratchet Strap with Sewn Loop
25D12-GH	Fixed End Only for 27'/30' Ratchet Strap with Grab Hook
25D12-CX	Fixed End Only for 27'/30' Ratchet Strap with Chain Anchor

Part #	Description
25R25-FH	Adjustable End for 27' Ratchet Strap with Flat Hook
25R25-DR	Adjustable End for 27' Ratchet Strap with Delta Ring
25R25-TSH	Adjustable End for 27' Ratchet Strap with Snap Hook
25R25-WH	Adjustable End for 27' Ratchet Strap with Wire Hook
25R25-SL	Adjustable End for 27' Ratchet Strap with Sewn Loop
25R25-GH	Adjustable End for 27' Ratchet Strap with Grab Hook
25R25-CX	Adjustable End for 27' Ratchet Strap with Chain Anchor

Part #	Description
25R28-FH	Adjustable End for 30' Ratchet Strap with Flat Hook
25R28-DR	Adjustable End for 30' Ratchet Strap with Delta Ring
25R28-TSH	Adjustable End for 30' Ratchet Strap with Snap Hook
25R28-WH	Adjustable End for 30' Ratchet Strap with Wire Hook
25R28-SL	Adjustable End for 30' Ratchet Strap with Sewn Loop
25R28-GH	Adjustable End for 30' Ratchet Strap with Grab Hook
25R28-CX	Adjustable End for 30' Ratchet Strap with Chain Anchor



INTERIOR VAN PRODUCTS

PCC Logistic Straps are constructed from 2 inch webbing and designed to accommodate most interior van cargo restraint applications. All logistic straps feature a 4 foot fixed end. All adjustable running lengths are sewn captive to the ratchet or cam buckle to avoid separation and loss of either strap assembly piece. Alternate working load limits, lengths and widths of webbing, as well as different buckles and end fittings are available upon request.



STANDARD COLOR CODE FOR LOGISTIC STRAPS

PACIFIC
12 foot

PACIFIC
16 foot

PACIFIC
20 foot

NOTE: Special lengths, colors and alternate end fittings available upon request. Please contact your Pacific Sales Representative for pricing.

LOGISTIC RATCHET STRAPS

2 Inch Logistic Ratchet Straps with Spring E Fittings



7021 Ratchet Buckle and 2 Inch 6M Webbing

	<u>Part #</u>	<u>Length</u>	<u>End Hardware</u>
	2350-12-SE	12'	EFTG-2 Spring E Fitting
	2350-16-SE	16'	EFTG-2 Spring E Fitting
	2350-20-SE	20'	EFTG-2 Spring E Fitting

2 Inch Logistic Ratchet Straps with 3 Piece E Fittings



7021 Ratchet Buckle and 2 Inch 6M Webbing

	2350-12-3P	12'	EFTG-3PC E Fitting
	2350-16-3P	16'	EFTG-3PC E Fitting
	2350-20-3P	20'	EFTG-3PC E Fitting

2 Inch Logistic Ratchet Straps with Butterfly Fittings



7021 Ratchet Buckle and 2 Inch 6M Webbing

	2350-12-BF	12'	BF-2 Butterfly Fitting
	2350-16-BF	16'	BF-2 Butterfly Fitting
	2350-20-BF	20'	BF-2 Butterfly Fitting

2 Inch Logistic Ratchet Straps with Wire Hooks



7021 Ratchet Buckle and 2 Inch 6M Webbing



Part #	Length	End Hardware
2350-12-WH	12'	WH-2-1.5M Wire Hook
2350-16-WH	16'	WH-2-1.5M Wire Hook
2350-20-WH	20'	WH-2-1.5M Wire Hook

2 Inch Logistic Ratchet Straps with F Hooks



7021 Ratchet Buckle and 2 Inch 6M Webbing



2350-12-SFH	12'	SFH-2-2M Series F Hook
2350-16-SFH	16'	SFH-2-2M Series F Hook
2350-20-SFH	20'	SFH-2-2M Series F Hook

LOGISTIC CAM STRAPS

2 Inch Logistic Cam Buckle Straps with Spring E Fittings



CB-2 Cam Buckle and 2 Inch 6M Webbing



2360-12-SE	12'	EFTG-2 Spring E Fitting
2360-16-SE	16'	EFTG-2 Spring E Fitting
2360-20-SE	20'	EFTG-2 Spring E Fitting

2 Inch Logistic Cam Buckle Straps with 3 Piece E Fittings



2360-12-3P	12'	EFTG-3PC E Fitting
2360-16-3P	16'	EFTG-3PC E Fitting
2360-20-3P	20'	EFTG-3PC E Fitting

2 Inch Logistic Cam Buckle Straps with Butterfly Fittings



CB-2 Cam Buckle and 2 Inch 6M Webbing



Part #	Length	End Hardware
2360-12-BF	12'	Series F BF-2 Butterfly Fitting



2360-16-BF	16'	Series F BF-2 Butterfly Fitting
------------	-----	---------------------------------



2360-20-BF	20'	Series F BF-2 Butterfly Fitting
------------	-----	---------------------------------

2 Inch Logistic Cam Buckle Straps with Wire Hooks



CB-2 Cam Buckle and 2 Inch 6M Webbing



2360-12-WH	12'	WH-2-1.5M Wire Hook
------------	-----	---------------------



2360-16-WH	16'	WH-2-1.5M Wire Hook
------------	-----	---------------------



2360-20-WH	20'	WH-2-1.5M Wire Hook
------------	-----	---------------------

2 Inch Logistic Cam Buckle Straps with F Hooks



CB-2 Cam Buckle and 2 Inch 6M Webbing



2360-12-SFH	12'	SFH-2-2M F Hook
-------------	-----	-----------------



2360-16-SFH	16'	SFH-2-2M F Hook
-------------	-----	-----------------



2360-20-SFH	20'	SFH-2-2M F Hook
-------------	-----	-----------------

1.75 Inch Overcenter Buckle Straps with Spring E Fittings



512 Overcenter Buckle and 1.75 Inch 6.5M Webbing



2430-12-SE	12'	EFTG-2-4.5M Spring E Fitting
2430-16-SE	16'	
2430-20-SE	20'	

2 Inch Rope Tie-offs

PCC 2 Inch Rope Tie-offs are designed to be used with rope or light duty Ratchet and/or Cam Buckle Straps for interior van securement applications.

2300-06-SE
EFTG-2 Fitting, Length: 6"



2300-06-3P
EFTG-3PC Fitting, Length: 6"



2300-06-BF
BF-2 Fitting, Length: 6"



Door Pulls

Door Pulls are designed for easy operation of overhead doors, side doors and access to wheel carts. PCC Door Pulls feature a galvanized steel clip for rust protection and pre-punched holes for easy installation. The standard length of a PCC Door Pull is 12 inches. Other custom lengths or colors can be manufactured upon request.

2300-12-DC
2" x 12" Door Pull
with Galvanized Steel Clip



2300-24-DC
2" x 24" Door Pull
with Galvanized Steel Clip



2300-36-DC
2" x 36" Door Pull
with Galvanized Steel Clip



PAN FITTINGS

Pan Fittings with Rings



4275
Recessed Floor Ring



4280
360 Degree Recessed Floor Ring
(also available in black)



4290
Recessed Floor Ring



4295
Pan Fitting
with D-Ring and Trim Collar

Pacific offers a line of series E, A and F tracks designed to provide a variety of attachment foundations for standard decking/shoring and cargo restraint applications. PCC logistic tracks will accept all attachment hardware designed to be used with beams, bars and strap assemblies for use in series E, A or F tracks.



LOGISTIC TRACKS

Series E, A & F Tracks



PCC series E track is offered in 10 foot lengths. To prevent corrosion a primer coating is standard for both horizontal and vertical styles. For refrigerated applications, a galvanized finish is also offered. Series E track is designed to accept series E or A end fittings, beam sockets and decking/shoring beams. Series E track may be attached with screws, rivets or by welding.

PCC Series A track is offered in 10 foot lengths and is made with a primer coating to prevent corrosion. Series A track is designed to accept series E or A end fittings, beam sockets and decking/shoring beams. Series A track may be installed with screws, rivets or by welding.

PCC Series F track is offered in 10 foot lengths and is made with 3/4 or 1 inch holes. Series F track is designed to accept series F end fittings and shoring bars. Series F track may be installed vertically or horizontally with screws, rivets or by welding.



4212
Series E Horizontal Track
Painted - 10 ft.



4212-G
Series E Horizontal Track
Galvanized - 10 ft.



4215
A Horizontal Track
Painted - 10 ft.



4217
F Track, 3/4" Hole
Galvanized - 10 ft.



4200-EC
E-Track Plastic End Clip



4210
Series E Vertical Track
Painted - 10 ft.

NOTE: Specific fastener size and/or mounting method should be determined by the vehicle manufacturer or qualified installer.

Series E or A Decking/Shoring Beams

PCC Aluminum Decking/Shoring Beams are manufactured from heat treated 6061-T6 aluminum which provides the best strength-to-weight ratio. The heads or end fittings have all-steel construction with tapered ends for ease of operation and zinc plating for corrosion resistance. The heads also possess a steel trigger and spring mechanism for a long-lasting positive lock control.

PCC Beams, in Decking/Shoring applications, are designed to have a 2,000 lbs. uniformly distributed working load limit. Standard replacement parts for Decking/Shoring Beams and Bars available upon request. Please contact your Pacific Sales Representative for other information such as adjustment range.

PCC Wood Beam Sockets are designed for use with standard commercial grade 2"x 6" lumber or equivalent.

NOTE: The working load capacity of such lumber varies widely and should be inspected for proper grade marking.



5020
Series E or A Aluminum Beam for
96" Wide Trailers



4245
Series E or A
Locking Wood Beam Socket



TRC-1
Track Rite Clamp
Allows Securement Between Beams



5025
Series E or A Aluminum Beam for
96"- 102" Wide Trailers

5025-RK
Replacement Head and Pin for
Aluminum Beams

Universal Series F Round Shoring Bars

PCC Shoring Bars are for use in Series F round hole (3/4 inch) track. All bars are designed for quick and easy installation and removal from application. The tube used in manufacturing PCC bars has a galvanized finish to prevent corrosion. The Shoring Bars have a spring-loaded end that adjusts. Also, the bars can be adjusted by removing the roll pin, realigning the adjustment holes and replacing the pin.



5036
Universal Series F Round Shoring Bar
78" - 107"



LOAD LOCKS

Load Locks

PCC Load Locks have been designed to quickly and easily brace cargo by gloved hands in van applications at all temperatures. PCC Load Locks are offered in either high strength, heat treated 6061-T6 aluminum tubing or galvanized steel tubing. The ductile iron rack, handle and cast aluminum housing are proven performers for the trucking industry. The durable molded neoprene swivel feet provide excellent grip even at low temperatures. All the parts can be easily unbolted and replaced, and the feet will not scuff walls. All PCC Load Locks have an adjustment range from 89"-104". Custom lengths are available.



5050S

5050 Aluminum Load Lock (89" - 104")



5050SW

5050C Aluminum/Steel Load Lock (89" - 104")

5050S Steel Load Lock (89" - 104")

5050SW Steel Load Lock with Weld-On Feet (89" - 104")



5052 2-Piece Aluminum Load Lock (89" - 104")



5052S 2-Piece Steel Load Lock (89" - 104")

5053

5053 3-Piece Aluminum Load Lock (89" - 104")

5053S 3-Piece Steel Load Lock (89" - 104")

Load Lock Replacement Parts

Part #	Description
5058	Load Lock Part Set with Bolts
5059	Load Lock Part Set with Bolts and Feet
5060	Large Tube Foot for Load Locks
5062	Small Tube Foot for Load Lock
5064	Aluminum Housing with Lock Assembly
5065	Handle for Load Lock Assembly
5067	Extension Rack for Load Lock Assembly
5069	Large Aluminum Tube (78-1/2")
5069S	Large Steel Tube (78-1/2")
5070	Small Aluminum Tube (27")
5070S	Small Steel Tube (27")
5075	Load Lock Couplers for Break Down Bars



5064

5062

5065

5060

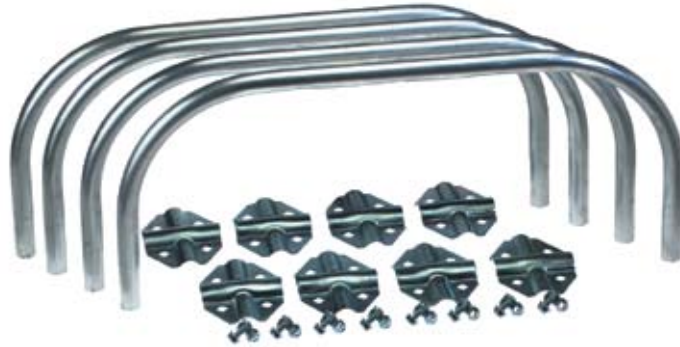
5067

HOOP SETS & JACK BARS

Hoop Sets

PCC Load Lock Hoop Sets have been designed to expand the bracing area of a Load Lock. This is particularly helpful with small packages or cargo not banded or shrink wrapped to any of the pallets within a van or trailer. Each set contains two hoops and all the attaching hardware for easy mounting to PCC Load Locks.

- 5055A
Aluminum
Hoop Set
- 5055S
Steel
Hoop Set



5055A

Pallet Stabilizer



5051-PS
Pallet Stabilizer
Prevents Partial Loads From
Falling or Shifting

Heavy Duty Jack Bars

Heavy Duty Jack Bar Replacement Parts

Part #	Description
5059BJB	Jack Bar Part Set with Bolt-On Foot
5059WJB	Jack Bar Part Set with Weld-On Foot
5069JB	Steel Tube for Jack Bar

NOTE: Special lengths available upon request.



5051RJB Heavy Duty Round Jack Bar with Bolt-On Feet (86" - 104")

5051RJW Heavy Duty Round Jack Bar with Weld-On Feet (86" - 104")

5051SJB Heavy Duty Square Jack Bar with Bolt-On Feet (86" - 104")

5051SJW Heavy Duty Square Jack Bar with Weld-On Feet (86" - 104")





MISCELLANEOUS

PCC One Inch All-Purpose Straps feature strength tested polyester webbing, heavy duty zinc plated ratchets or cam buckles with zinc plated and/or vinyl coated attachment hardware. PCC straps provide convenience, versatility and security for cargo restraint applications on pick-up trucks, car top racks and boat, utility, motorcycle or ATV trailers. PCC straps are easy to use and are equivalent in quality to Pacific's regulated ratchet and cam buckle strap assemblies for the heavy duty trucking industry. Custom length PCC straps can be ordered with alternate ratchets or cam buckles and a variety of end fittings. PCC straps are offered bulk packed or individually packed in a vinyl display bag with header cards. Custom packaging is available.



ONE INCH ALL-PURPOSE STRAPS

Light Duty Ratchet Straps



6022 Ratchet and 1 Inch 6C Webbing



Part #	Length	End Hardware
1045-09-VS	09'	1" Vinyl Coated Hook
1045-12-VS	12'	
1045-15-VS	15'	
1045-20-VS	20'	



16'	WH-1-3M Wire Hook
20'	DR-1-3M D-Ring



1045-15-WS	15'	Wrap Strap
------------	-----	------------

Heavy Duty Ratchet Straps



6030 Ratchet and 1 Inch 3.5M Webbing



09'	1" Vinyl Coated S Hook
12'	
15'	
20'	



16'	WH-1-3M Wire Hook
20'	DR-1-3M D-Ring



1050-15-WS	15'	Wrap Strap
------------	-----	------------

Light Duty Cam Buckle Straps



CB-1-7C Cam Buckle and 1 Inch 6C Webbing



Part #	Length	End Hardware
1055-06-VS	06'	VS-1-5C 1" Vinyl Coated S Hook
1055-09-VS	09'	
1055-12-VS	12'	
1055-15-VS	15'	
1055-20-VS	20'	
1055-16-WH	16'	WH-1-3M Wire Hook DR-1-3M D-Ring
1055-20-WH	20'	
1055-15-WS	15'	Wrap Strap

Heavy Duty Cam Buckle Straps

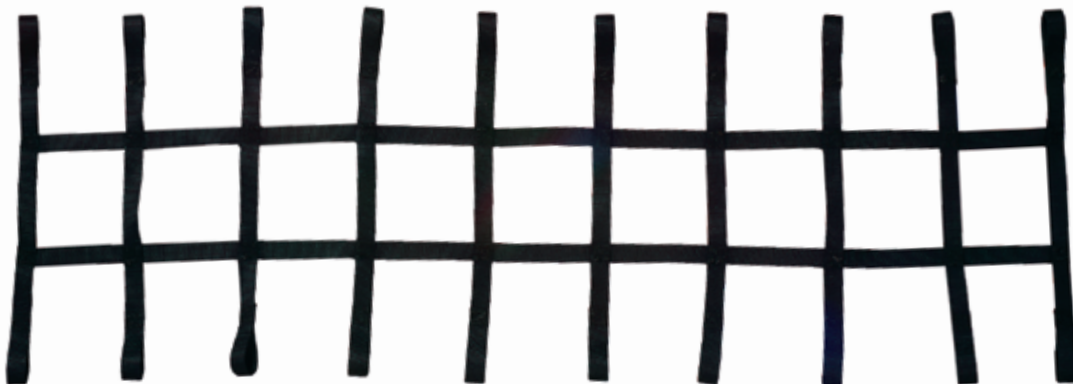


CB-1 Cam Buckle and 1 Inch 3.5M Webbing



1060-06-VS	06'	VS-1-1M 1" Vinyl Coated S Hook
1060-09-VS	09'	
1060-12-VS	12'	
1060-15-VS	15'	
1060-20-VS	20'	
1060-16-WH	16'	WH-1-3M Wire Hook DR-1-3M D-Ring
1060-20-WH	20'	
1060-15-WS	15'	Wrap Strap

NETS



Custom Nets can be ordered by contacting any PCC sales representative.

Pacific offers a broad range of quality webbings specifically designed for the rigorous requirements of the heavy duty trucking industry. The webbing varies by width, material, breaking strength and color as shown below. All PCC webbing has been treated to provide additional abrasion resistance, strength and durability.

BULK WEBBING

Bulk Webbing

Bulk Webbing

Part #	Width		Material	Breaking Strength		Stocked Colors
	inches	mm		lbs.	kgs.	
WBS1-2.5M-BL	1	25	Nylon/Poly.	2,500	1,135	Blue
WBS1-3.5M-BL	1	25	Nylon/Poly.	3,500	1,590	Blue
WBS2-6M-BL	2	50	Polyester	6,000	2,722	Blue
WBS2-6M-GR	2	50	Polyester	6,000	2,722	Gray
WBS2-6M-YL	2	50	Polyester	6,000	2,722	Yellow
WBS2-10M	2	50	Polyester	10,000	4,537	Yellow
WBS2-12M	2	50	Polyester	12,000	5,445	Yellow
WBA3-18M	3	75	Polyester	15,000	6,805	Yellow
WBA4-20M	4	100	Polyester	20,000	9,075	Yellow
WBA4-20M-BL	4	100	Polyester	20,000	9,075	Blue
WBA4-20M-RD	4	100	Polyester	20,000	9,075	Red
WBA4-24M	4	100	Polyester	24,000	10,890	Yellow



AUTO TIEDOWNS

Wheel Tiedowns



Part #	Description
TN-13-FH	13" Standard Tire or Wheel Tiedown
TN-14-FH	14" Standard Tire or Wheel Tiedown
TN-15-FH	15" Standard Tire or Wheel Tiedown
TN-16-FH	16" Standard Tire or Wheel Tiedown

NOTE:
Alternate End Fittings available upon request. Please contact your Pacific Sales Representative for pricing.



RC-2
Rubber Cleat for
2" strap

Custom Wheel Tiedowns
Please call PCC
for pricing.

Recovery Tow Straps

Recovery Tow Straps with Reinforced Eyes

Part #	Lengths	Description
RTS-220	2" x 20'	Recovery Tow Strap with Reinforced Eyes
RTS-320	3" x 20'	Recovery Tow Strap with Reinforced Eyes
RTS-420	4" x 20'	Recovery Tow Strap with Reinforced Eyes
RTS-430	4" x 30'	Recovery Tow Strap with Reinforced Eyes
RTS-620	6" x 20'	2 Ply Tow Strap with Reinforced Eyes

NOTE:
Other lengths and widths of Recovery Tow Straps may be available by Special Order. Please contact your Pacific Sales Representative for pricing.



AXLE STRAPS

Axle Straps

2 Inch 6M Webbing with T2400-2-3/8 Sleeve



Part #	Length	End Hardware
AS2321-DR	21"	DR-2-10M Delta Ring
AS2321-DR-BL	21"	DR-2-10M Delta Ring
AS2333-DR	33"	DR-2-10M Delta Ring
AS2333-DR-BL	33"	DR-2-10M Delta Ring

Heavy Duty Axle Straps

2 Inch 12M Webbing with T2400-2-3/8 Sleeve



AS2621-DR-RD	21"	DR-2-10M Delta Ring
AS2621-DR-BL	21"	DR-2-10M Delta Ring
AS2633-DR-RD	33"	DR-2-10M Delta Ring
AS2633-DR-BL	33"	DR-2-10M Delta Ring

OVERHEAD LIFTING SLINGS

Endless Lifting Slings (Type V)



Endless Lifting Slings (Type V) have the most versatile sling design as hook and load contact points can be rotated. For use in choker, vertical and basket hitches. The sling can be spread for improved load control.

Part #	Width	Choker WLL/lbs.	Vertical WLL/lbs.	90° WLL/lbs.	60° WLL/lbs.	45° WLL/lbs.	30° WLL/lbs.	Base 8' Sling Wt.	Adder/Ft. Sling Wt.
EN1-901	1"	2,500	3,200	6,400	5,540	4,520	3,200	.95	.11
EN2-901	1"	5,000	6,400	12,800	11,080	9,050	6,400	1.96	.22

Available in either nylon or polyester webbing. For polyester webbing, add the letter "P" to the stock number (e.g. EN2-904P).



Eye & Eye Lifting Slings (Type III & IV)



A versatile sling for use in choker, vertical and basket hitches. Flat Eye Slings (Type III) are somewhat easier to remove from beneath the load after it is in place. Type III eyes are furnished unless HT (Type IV) eyes are specified. The Half Twist (Type IV) Eye is recommended when slings are to be used in a choker hitch. This design performs equally well in vertical or basket hitches. For Half Twist Eyes specify "HT" after the Stock No. (e.g. EE1-903-HT). **Tapered eyes are furnished on slings over 2 inches wide to provide for the proper relationship between the sling and the lifting hook.** Untapered eyes are available on request.

Part #	Width	Eye Width	Eye Length	Choker WLL/lbs.	Vertical WLL/lbs.	90° WLL/lbs.	60° WLL/lbs.	45° WLL/lbs.	30° WLL/lbs.	Base 8' Sling Wt.	Adder/Ft. Sling Wt.
EE1-901	1"	1"	9"	1,200	1,600	3,200	2,770	2,260	1,600	.67	.056
EE2-901	1"	1"	9"	2,500	3,200	6,400	5,540	4,520	3,200	1.00	.112
EE1-902	2"	2"	9"	2,500	3,200	6,400	5,540	4,520	3,200	1.34	.112
EE2-902	2"	2"	9"	6,000	6,400	12,800	11,080	9,050	6,400	2.02	.220
EE2-903	3"	1.5"	12"	7,000	8,860	17,720	15,340	12,530	8,860	3.24	.350
EE2-904	4"	1.5"	12"	9,000	11,400	22,800	19,740	16,120	11,400	3.96	.440

Available in either nylon or polyester webbing. For polyester webbing, add the letter "P" to the stock number (ie: EN2-904P).

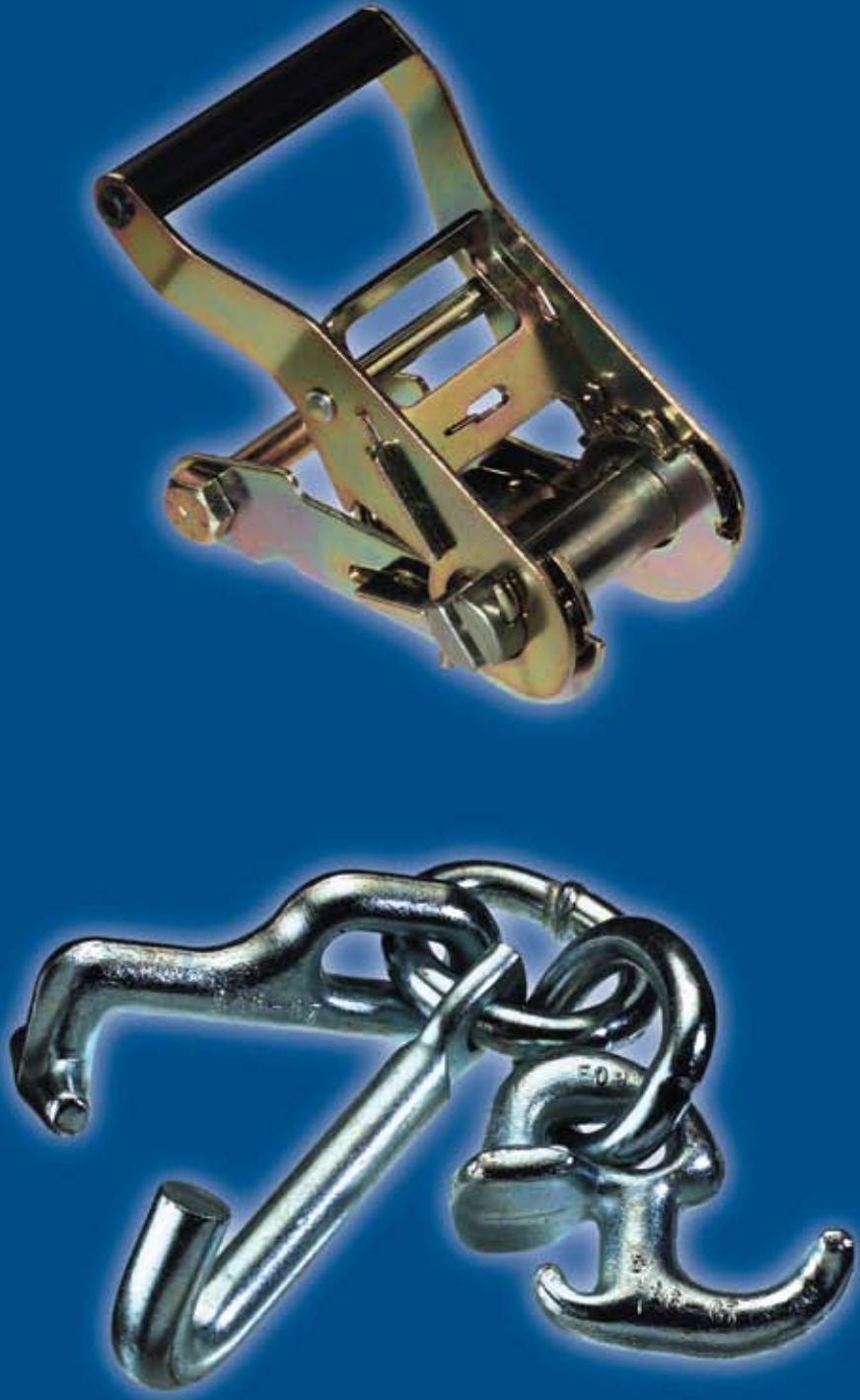


Type III



Type IV

WARNING: Product can fail if damaged, misused or overloaded. Inspect before use. Use only if trained. Observe and do not exceed work load limit. DEATH or INJURY can occur from improper use or maintenance.
DO NOT EXCEED WORKING LOAD LIMITS



GENERAL HARDWARE

Pacific inventories a broad group of ratchet buckles, cam buckles and attachment hardware required by the heavy duty trucking industry. All Pacific hardware has been constructed from quality materials with outstanding craftsmanship achieving excellent strength, durability and ease of operation. The hardware accommodates webbing widths ranging from 1 to 4 inches with various breaking strengths and working load limits for each specific assembly's requirement. All Pacific hardware is made available to industrial sewers for use as components in the construction of tiedown assemblies. 5

TENSIONERS

Ratchet Buckles

5

To operate a Ratchet Buckle, pull the webbing through the mandrel bars eliminating any slack. Operate the ratchet handle back and forth until the webbing is properly tensioned. The mandrel bars must have at least two wraps of webbing to prevent slippage. To release the webbing, pull the handle pawl to the fully opened position and rotate the handle itself past the center position on the ratchet to the fully open position. Finally, pull the webbing back through the mandrel creating slack.



6022
1" Standard Handle Ratchet



6022SS
1" Standard Handle Ratchet
Stainless Steel



6030
1" Wide Handle Ratchet



7030-MP
Mounting Plate for
2" Ratchets



6030SS
1" Wide Handle Ratchet
Stainless Steel



7021
2" Wide Handle Ratchet



7032
2" Standard Handle Ratchet



7031
2" Long Wide Handle Ratchet



7031SS
2" Long Wide Handle Ratchet
Stainless Steel



7030
2" Extra Long Wide Handle Ratchet



8032
3" Standard Handle Ratchet



9032
4" Standard Handle Ratchet

Overcenter Buckles

5



504
2" Overcenter Buckle
Black Epoxy



511
1 3/4" Overcenter Buckle
Stainless Steel



512
1 3/4" Overcenter Buckle

Cam Buckles

5



CB-1-5CS
1" Cam Buckle



CB-1-7C
1" Cam Buckle



CB-1
1" Cam Buckle



CB-2
2" Cam Buckle

ATTACHMENT HARDWARE

Flat Hooks

5



FH-1
1" Flat Hook



FH-2N
2" Narrow Flat Hook



FH-2
2" Flat Hook



FH-4
4" Flat Hook



FH-4-K
4" Flat Hook with Keeper
(Shown with Abrasion Clip)

Snap Hooks



SH-1-5M
1" Flat Snap Hook



SH-2-6M
2" Flat Snap Hook



SH-2-10M
2" Flat Snap Hook



TSH-2-10M
2" Twisted Snap Hook



7033-SHK
Ratchet Snap Hook with Spacers

Wire Hooks



WH-1-3M
1" Wire Hook



WH-2-1.5M
2" Wire Hook



WH-2-2M
2" Wire Hook



WH-2-2.5M
2" Wire Hook



WH-2-5M
2" Wire Hook



WH-2-10M
2" Wire Hook



WH-3-22M
3" Wire Hook

Chain Anchors



CX-3/4-16M
18" Chain Anchor with Pear Link



CX-3-18M
18" Chain Anchor with 3" V-Ring



CX-4-18M
18" Chain Anchor with 4" V-Ring



GH-2/4-16M
3/8" Grab Hook Assembly



JH-8M
5/8" Long Fairlane
Closed Eye Hook



RTJ4-5-G7
5' Car Hauler Chain Assembly
Also Available in 6' Lengths



RTJ-11M
RTJ Cluster Hook

5

D-Rings



CR-2-10M
2" Circular Ring



DR-025
1/4" Welded D-Ring
with Bolt-On Clip



DR-2-10M
2" Delta Ring



DR-2-16M
2" Delta Ring



DR-1-3M
1" D-Ring



DR-1.75-4M
1 3/4" D-Ring



DR-2-4M
2" D-Ring

5

V-Rings

5



VR-3
3" V-Ring



VR-4
4" V-Ring

Specialty Fittings

5



SA-2-3M
2" Strap Adjuster



DC-2
2" Galvanized Door Clip



WD-1-3M
1" Waisted D-Ring



SLT-2-2M
2" Slat Hook



CH-2-3M
2" Closed Hook (Rave Hook)



7034-WH
J Hook Attachment for 2" Ratchet 1 3/8" Long

S Hooks

5



VS-1-4C
1" Vinyl Coated S Hook



VS-1-5C
1" Vinyl Coated S Hook



VS-1-1M
1" Vinyl Coated S Hook



ZS-1-1M
1" Zinc Plated S Hook

Logistic Track Fittings



EFTG-2
Series E or A Spring Fitting



EFTG-3PC
Series E or A 3-Piece Fitting



EFTG-2DR
Series E or A Spring Fitting
with 2" D-Ring



EFTG-2CR
Series E or A Spring Fitting
with 2" Circle Ring



BF-2
Series F Butterfly Fitting



SFH-2-2M
Series F Hook

Quick Links



QL-025	1/4"	Stainless Steel Quick Link
QL-031	5/16"	Stainless Steel Quick Link
QL-037	3/8"	Stainless Steel Quick Link
QL-025-Z	1/4"	Galvanized Quick Link
QL-031-Z	5/16"	Galvanized Quick Link
QL-037-Z	3/8"	Galvanized Quick Link



QL-031

2 Inch Lashing Webbing Winches

1

Lashing Winches are designed with versatility and can be used in many different applications (e.g. pick-up truck racks). Lashing Winches can be bolted or welded in place like a heavy duty trailer winch. Lashing Winches feature a quick release for ease of operation much like that of a ratchet buckle. Lashing Winches can be easily operated using 1 1/8 inch socket drive (not included) and will accept webbing straps up to 2 inch in width.



7210
2" Lashing - Right Hand



7211
2" Lashing - Left Hand

Gate Latch

5



GL08
Gate Latch

Please ask your Pacific Cargo Control, Inc. sales representative for a referral to Pacific Industries, Inc. for further information on the products below.

Bearings



Tapped Base Bearings (UCPA)



Take-Up Bearings (UCST)



2-Bolt Flange Bearings (SBLF)



Pillow Block Bearings (UCP)



Pillow Block Bearings (HCPK)

Chains



81X
Elite™ Conveyor Chain



WR78
Welded Steel Chain



H78
Malleable Cast Chain



H78B
Malleable Cast Chain



Elite™ Roller Chain

5

Force™ Shaft Collars



Force™ Solid Collars (SC)



Force™ Single Split Collars (1SC)



Force™ Double Split Stainless Collars (2SSC)



PRODUCT INFORMATION

PACIFIC CARGO CONTROL, INC. UTILIZES THE INDUSTRY'S FIRST ELECTROPHORETIC PAINT PROCESS (EPP)

PCC's paint process gives each winch a superior paint job by coating the exterior and interior with a uniform thickness of paint. This process allows the paint and metal surfaces to join in an actual chemical bond. There is no other process which provides such a durable finish for exposed surfaces that take a beating from the elements and road debris.

Inside the mandrel where the strap is fed, the electrophoretic paint process deposits the coating in every hidden and recessed area of the winch. The gear and pawl rotate effortlessly now that conventional paint no longer gums them up. Best of all, PCC's electrophoretically painted winches are virtually scratch proof while our competitors' conventional paint scratches easily and flakes off. This process provides an exceptional corrosion-resistant, long-lasting coat which will keep a winch looking newly-painted long after it has been put into use.

The Electrophoretic Paint Process involves many detailed steps. First, the winches are shot blasted to smooth surfaces by removing weld spatter, incidental rust, burrs and other imperfections. Each winch is then dipped in a tank of caustic liquid (like a chemical rinse of sodium hydroxide). In this step, corrosion on the steel's surface is dissolved or eaten away by chemical action. The winch is then dunked in a tank of untreated water to aid in rinsing away the caustic wash.

Then, the winch is dipped in a phosphatizing tank. This phosphorus bath protects metal surfaces from corrosion and helps the paint coat the surface of the winch. The winch is then dipped in deionized water to help rid the winch of electrical charges and alkaline. Finally the winch is dipped in the electrophoretic coating tank. This process coats all the surfaces of the winch with paint.

After being coated, the winch is then rinsed in a tank of untreated water and runoff paint is recycled back to the electrophoretic coating tank. As a final rinse, the winch is then rinsed in a tank of reaction liquid. Each winch is then hung to drip and air dry. Finally, each winch is placed in a paint curing oven to seal the most lasting coat offered in the industry.

SPECIFICATIONS

Specifications shown in this catalog are subject to change without notice. All drawing dimensions and weights are shown in inches and pounds.

PRICING

This catalog does not contain any pricing information. To obtain price sheets, shipping policy and terms of sale, please contact your Pacific Cargo Control, Inc. Sales Representative.

LIMITED WARRANTY

LIMITATION OF WARRANTIES, REMEDIES AND DAMAGES - THE WARRANTY STATED BELOW IS GIVEN IN PLACE OF ALL OTHER WARRANTIES, EXPRESS OR IMPLIED, OF MERCHANTABILITY, FITNESS FOR A PARTICULAR PURPOSE OR OTHERWISE. NO PROMISE OR AFFIRMATION OF FACT MADE BY ANY AGENT OR REPRESENTATIVE OF SELLER SHALL CONSTITUTE A WARRANTY BY SELLER OR GIVE RISE TO ANY LIABILITY OR OBLIGATION.

Seller warrants that, on the date of delivery to carrier, the goods are free from defects in workmanship and materials.

THE BUYER'S EXCLUSIVE REMEDY AGAINST SELLER IN THE EVENT OF BREACH OF WARRANTY OR CONTRACT OR FOR NEGLIGENCE OR OTHERWISE WITH RESPECT TO GOODS SOLD SHALL BE FOR THE REPAIR OR REPLACEMENT OF DEFECTIVE GOODS, F.O.B. SELLER'S POINT OF SHIPMENT. NO OTHER REMEDY (INCLUDING, BUT NOT LIMITED TO, INCIDENTAL OR CONSEQUENTIAL DAMAGES, AS THOSE TERMS ARE DEFINED IN SECTION 2-715 OF THE UNIFORM COMMERCIAL CODE, FOR LOST PROFITS, LOST SALES, INJURY TO PERSON OR PROPERTY, OR ANY OTHER INCIDENTAL OR CONSEQUENTIAL LOSS) SHALL BE AVAILABLE TO BUYER.

Upon discovery of an alleged defect, Buyer will immediately notify Seller who will advise of the location to which the product should be returned for inspection, via freight pre-paid. If Seller determines that return, repair or replacement is not feasible, Buyer's remedy shall be limited to a refund of the purchase price.

Any action against Seller for breach of warranty, negligence or otherwise must be commenced within one year after such cause of action accrues.

NO CLAIM AGAINST SELLER FOR ANY DEFECT IN THE GOODS SHALL BE VALID OR ENFORCEABLE UNLESS BUYER'S WRITTEN NOTICE THEREOF IS RECEIVED BY SELLER WITHIN TWELVE (12) MONTHS FROM THE DATE OF SHIPMENT.

Seller shall not be liable for any damage, injury or loss arising out of the use of the goods, if, prior to such damage, injury or loss, such goods are (1) damaged, over exposed to the elements or chemicals or otherwise misused following Seller's delivery to carrier; (2) not maintained, inspected, or used in compliance with applicable law and Seller's written instructions and recommendations; or (3) installed, repaired, altered or modified without compliance with such law, instructions or recommendations.

1045-09-VS_____MS-2	2360-16-SFH_____IV-4	36230-FH_____FP-16	4530-WH-BL_____FP-14
1045-12-VS_____MS-2	2360-16-WH_____IV-4	36230-GH_____FP-16	4530-WH-RD_____FP-14
1045-15-VS_____MS-2	2360-20-3P_____IV-3	36230-VR_____FP-16	46227-CX_____FP-16
1045-15-WS_____MS-2	2360-20-BF_____IV-4	36230-WH_____FP-16	46227-FH_____FP-16
1045-16-WH_____MS-2	2360-20-SE_____IV-3	3627-CX_____FP-15	46227-GH_____FP-16
1045-20-VS_____MS-2	2360-20-SFH_____IV-4	3627-FH_____FP-15	46227-VR_____FP-16
1045-20-WH_____MS-2	2360-20-WH_____IV-4	3627-GH_____FP-15	46227-WH_____FP-16
1050-09-VS_____MS-2	2430-12-SE_____IV-4	3627-VR_____FP-15	46230-CX_____FP-16
1050-12-VS_____MS-2	2430-16-SE_____IV-4	3627-WH_____FP-15	46230-FH_____FP-16
1050-15-VS_____MS-2	2430-20-SE_____IV-4	3630-CX_____FP-15	46230-GH_____FP-16
1050-15-WH_____MS-2	25027-CX_____FP-17	3630-FH_____FP-15	46230-VR_____FP-16
1050-16-WH_____MS-2	25027-DR_____FP-17	3630-GH_____FP-15	46230-WH_____FP-16
1050-20-VS_____MS-2	25027-FH_____FP-17	3630-VR_____FP-15	5020_____IV-7
1050-20-WH_____MS-2	25027-GH_____FP-17	3630-WH_____FP-15	5025_____IV-7
1055-06-VS_____MS-3	25027-SL_____FP-17	41060_____MS-3	5025S_____IV-7
1055-09-VS_____MS-3	25027-TSH_____FP-17	4200-EC_____IV-6	5036_____IV-7
1055-12-VS_____MS-3	25027-WH_____FP-17	4210_____IV-6	504_____GH-3
1055-15-VS_____MS-3	25030-CX_____FP-17	4212_____IV-6	5050_____IV-8
1055-15-WH_____MS-3	25030-DR_____FP-17	4212-G_____IV-6	5050C_____IV-8
1055-15-WS_____MS-3	25030-FH_____FP-17	4215_____IV-6	5050CMJB_____IV-9
1055-16-WH_____MS-3	25030-GH_____FP-17	4217_____IV-6	5050MJB_____IV-9
1055-20-VS_____MS-3	25030-SL_____FP-17	4217-1_____IV-6	5050S_____IV-8
1055-20-WH_____MS-3	25030-TSH_____FP-17	4245_____IV-7	5050SMJB_____IV-9
1060-06-VS_____MS-3	25030-WH_____FP-17	4275_____IV-5	5050SMJBW_____IV-9
1060-09-VS_____MS-3	2527-CX_____FP-15	4280_____IV-5	5050SW_____IV-8
1060-12-VS_____MS-3	2527-DR_____FP-15	4290_____IV-5	5051RJB_____IV-9
1060-15-VS_____MS-3	2527-FH_____FP-15	4295_____IV-5	5051RJW_____IV-9
1060-15-WS_____MS-3	2527-GH_____FP-15	4527-CX_____FP-14	5051SJB_____IV-9
1060-16-WH_____MS-2	2527-WH_____FP-15	4527-CX-BL_____FP-14	5051SJW_____IV-9
1060-20-VS_____MS-3	2530-CX_____FP-15	4527-CX-RD_____FP-14	5052_____IV-8
1060-20-WH_____MS-2	2530-DR_____FP-15	4527-FH_____FP-14	5052S_____IV-8
21050_____MS-3	2530-FH_____FP-15	4527-FH-BL_____FP-14	5053_____IV-8
2300-06-3P_____IV-5	2530-GH_____FP-15	4527-FH-RD_____FP-14	5053S_____IV-8
2300-06-BF_____IV-5	2530-WH_____FP-15	4527-GH_____FP-14	5055A_____IV-9
2300-06-SE_____IV-5	25D12-CX_____FP-17	4527-GH-BL_____FP-14	5055S_____IV-9
2300-12-DC_____IV-5	25D12-DR_____FP-17	4527-GH-RD_____FP-14	5058_____IV-8
2300-24-DC_____IV-5	25D12-FH_____FP-17	4527-SL_____FP-14	5059_____IV-8
2300-36-DC_____IV-5	25D12-GH_____FP-17	4527-SL-BL_____FP-14	5059BJB_____IV-9
2350-12-3P_____IV-2	25D12-SL_____FP-17	4527-SL-RD_____FP-14	5059JB_____IV-9
2350-12-BF_____IV-2	25D12-TSH_____FP-17	4527-VR_____FP-14	5059MJB_____IV-9
2350-12-SE_____IV-2	25D12-WH_____FP-17	4527-VR-BL_____FP-14	5059WJB_____IV-9
2350-12-SFH_____IV-3	25R25-CX_____FP-17	4527-VR-RD_____FP-14	5060_____IV-8, IV-9
2350-12-WH_____IV-3	25R25-DR_____FP-17	4527-WH_____FP-14	5062_____IV-8, IV-9
2350-16-3P_____IV-2	25R25-FH_____FP-17	4527-WH-BL_____FP-14	5064_____IV-8
2350-16-BF_____IV-2	25R25-GH_____FP-17	4527-WH-RD_____FP-14	5065_____IV-8
2350-16-SE_____IV-2	25R25-SL_____FP-17	4530-CX_____FP-14	5067_____IV-8
2350-16-SFH_____IV-3	25R25-TSH_____FP-17	4530-CX-BL_____FP-14	5069_____IV-8, IV-9
2350-16-WH_____IV-3	25R25-WH_____FP-17	4530-CX-RD_____FP-14	5069JB_____IV-9
2350-20-3P_____IV-2	25R28-CX_____FP-17	4530-FH_____FP-14	5069S_____IV-8
2350-20-BF_____IV-2	25R28-DR_____FP-17	4530-FH-BL_____FP-14	5070_____IV-8, IV-9
2350-20-SE_____IV-2	25R28-FH_____FP-17	4530-FH-RD_____FP-14	5070S_____IV-8, IV-9
2350-20-SFH_____IV-3	25R28-GH_____FP-17	4530-GH_____FP-14	5075_____IV-8
2350-20-WH_____IV-3	25R28-SL_____FP-17	4530-GH-BL_____FP-14	511_____GH-3
2360-12-3P_____IV-3	25R28-TSH_____FP-17	4530-GH-RD_____FP-14	512_____GH-3
2360-12-BF_____IV-4	25R28-WH_____FP-17	4530-SL_____FP-14	6012_____FP-11
2360-12-SE_____IV-3	36227-CX_____FP-16	4530-SL-BL_____FP-14	6016_____FP-11
2360-12-SFH_____IV-4	36227-FH_____FP-16	4530-SL-RD_____FP-14	6022_____GH-2
2360-12-WH_____IV-4	36227-GH_____FP-16	4530-VR_____FP-14	6022SS_____GH-2
2360-16-3P_____IV-3	36227-VR_____FP-16	4530-VR-BL_____FP-14	6030_____GH-2
2360-16-BF_____IV-4	36227-WH_____FP-16	4530-VR-RD_____FP-14	6030SS_____GH-2
2360-16-SE_____IV-3	36230-CX_____FP-16	4530-WH_____FP-14	6032_____GH-2



PARTS INDEX BY NUMBER

6043	FP-10	7545-RH	FP-6	DC-2	GH-6	RTS-430	MS-5
6048	FP-10	7570	FP-7	DR-025	FP-11,GH-5	RTS-620	MS-5
6050	FP-10	7571	FP-5	DR-050	FP-11	SA-2-3M	GH-6
6052	FP-10	7572	FP-7	DR-062	FP-11	SC-18-150	FP-13
6053	FP-10	7573	FP-7	DR-075	FP-11	SC-25-150	FP-13
6054	FP-10	7573-3B	FP-7	DR-1.75-4M	GH-5	SC-31-150	FP-13
6055	FP-10	7574	FP-7	DR-1-3M	GH-5	SC-38-150	FP-13
6056	FP-10	7574-3B	FP-7	DR-100L	FP-11	SC-38-250	FP-13
6057	FP-10	7574A	FP-7	DR-100L-B	FP-11	SC-50-100	FP-13
6070	FP-10	7576	FP-7	DR-100S	FP-11	SFH-2-2M	GH-7
6070-25	FP-10	7580-AT	FP-9	DR-2-10M	GH-5	SH-1-5M	GH-4
6070-HK	FP-10	7580-AT-TR	FP-9	DR-2-16M	GH-5	SH-2-10M	GH-4
6071	FP-10	7580-AT-TRW	FP-9	DR-2-4M	GH-5	SH-2-6M	GH-4
6073	FP-10	7580-ST	FP-9	DR-6M	FP-11	T2400-2-3/8	FP-15
6073-HK	FP-10	7585	FP-8	EE1-901	MS-6	TN-13-FH	MS-4
6074	FP-10	7590	FP-8	EE1-902	MS-6	TN-14-FH	MS-4
7002	FP-10	7590C	FP-8	EE2-901	MS-6	TN-15-FH	MS-4
7003	FP-10	7590-TR	FP-8	EE2-902	MS-6	TN-16-FH	MS-4
7004	FP-10	7590S	FP-8	EE2-903	MS-6	TR-38-100	FP-13
7004B	FP-10	8032	GH-2	EE2-904	MS-6	TR-38-50	FP-13
7004T	FP-10	8425	FP-4	EFTG-2	GH-7	TR-38-600	FP-13
7005	FP-10	8425-CM	FP-7	EFTG-2DR	GH-7	TR-44-600	FP-13
7005B	FP-10	8425-LH	FP-4	EFTG-3PC	GH-7	TR-50-50	FP-13
7005T	FP-10	8425C	FP-5	EFTG-2CR	GH-7	TR-50-600	FP-13
7006	FP-12	8427	FP-5	EN1-901	MS-6	TR-63-600	FP-13
7007	FP-12	8427-CM	FP-5	EN2-901	MS-6	TSH-2-10M	GH-4
7008	FP-12	8427C	FP-5	FH-1	GH-3	VR-3	GH-6
7010	FP-12	8430	FP-4	FH-2	GH-3	VR-4	GH-6
7012	FP-12	8430-F	FP-8	FH-2N	GH-3	VS-1-1M	GH-6
7014	FP-12	8430-U	FP-8	FH-4	GH-3	VS-1-4C	GH-6
7015	FP-12	8430C	FP-5	FH-4-K	GH-3	VS-1-5C	GH-6
7016	FP-12	8430S	FP-4	GH-2/4-16M	GH-5	WBA3-18M	MS-4
7017	FP-12	8435	FP-4	PR-25-50	FP-13	WBA4-20M	MS-4
7017B	FP-12	9032	GH-2	QL-025	GH-7	WBA4-20M-BL	MS-4
7022	GH-2	9525	FP-4	QL-031	GH-7	WBA4-20M-RD	MS-4
7026-ET	FP-12	9525-2S	FP-4	QL-037	GH-7	WBA4-24M	MS-4
7028	FP-15	9525C	FP-5	RB09	FP-13	WBS1-2.5M-BL	MS-4
7028-B	FP-15	9525C-2S	FP-5	RB10-D	FP-13	WBS1-3.5M-BL	MS-4
7030	GH-2	9530	FP-4	RB15	FP-13	WBS2-10M	MS-4
7031	GH-2	9530-2S	FP-4	RB15-D	FP-13	WBS2-12M	MS-4
7031SS	GH-2	9530-M	FP-4	RB21-D	FP-13	WBS2-5M-BL	MS-4
7032	GH-2	9530C	FP-5	RB21	FP-13	WBS2-5M-GR	MS-4
7041	FP-15	9530C-2S	FP-5	RB31	FP-13	WBS2-5M-YL	MS-4
7042	FP-15	AS2521-DR	MS-5	RB31-D	FP-13	WBS2-6M-BL	MS-4
7045	FP-15	AS2521-DR-BL	MS-5	RB41	FP-13	WD-1-3M	GH-6
7046	FP-15	AS2533-DR	MS-5	RB41-D	FP-13	WH-1-3M	GH-4
7047	FP-15	AS2533-DR-BL	MS-5	RBTS100	FP-13	WH-2-1.5M	GH-4
7048	FP-15	AS2621-DR-BL	MS-5	RH-038-B	FP-12	WH-2-10M	GH-4
7210	FP-9	AS2621-DR-RD	MS-5	RR375H	FP-13	WH-2-2.5M	GH-4
7211	FP-9	AS2633-DR-BL	MS-5	RR375HM	FP-13	WH-2-2M	GH-4
7420-D	FP-8	AS2633-DR-RD	MS-5	RR375S	FP-13	WH-2-5M	GH-4
7430-D	FP-8	BF-2	GH-7	RR375SM	FP-13	WH-3-22M	GH-4
7440-D	FP-8	CB-1	GH-3	RR438H	FP-13	ZS-1-1M	GH-6
7525	FP-6	CB-1-5CS	GH-3	RR438HM	FP-13		
7527	FP-6	CB-1-7C	GH-3	RR438S	FP-13		
7530	FP-6	CB-2	GH-3	RR438SM	FP-13		
7530-U	FP-8	CH-2-3M	GH-6	RRSJ100	FP-13		
7540	FP-6	CR-2-10M	GH-5	RTJ-11M	GH-5		
7540-LH	FP-6	CX-3/4-16M	GH-5	RTS-220	MS-5		
7540-NP	FP-6	CX-3-18M	GH-5	RTS-320	MS-5		
7545-LH	FP-6	CX-4-18M	GH-5	RTS-420	MS-5		





PACIFIC CARGO CONTROL, INC.

Main Office:

18200 S.W. Teton Ave.

Tualatin, OR 97062

800-821-8431

503-692-9297

FAX 503-692-5674

Warehouses & Manufacturing:

Tualatin, OR

Atlanta, GA

Dallas, TX

Toronto, ON Canada

Winnipeg, MB Canada

***For over 15 years, Pacific Cargo Control, Inc.
has continued with the basic principles and goals
that have been the foundation of our growth...***

- Give every customer the best service possible.
- Design, manufacture and supply high quality cargo restraint equipment, while maintaining competitive prices for our distributors.
- Maintain an in-depth inventory to facilitate shipments.

This catalog contains specifications and information on the most commonly used cargo restraint products.

If your application is specialized or you do not find the desired product in our catalog, please contact us directly.

Pacific Cargo Control, Inc. will be pleased to evaluate your requirements.

Distributed by



Pacific Cargo Control, INC.

78200 SW TETON AVENUE • TUALATIN, OREGON 97062 • 503.692.9297 • 503.692.5674

www.pacificcargo.com

© 2002 Catalog No. 802

Printed in USA